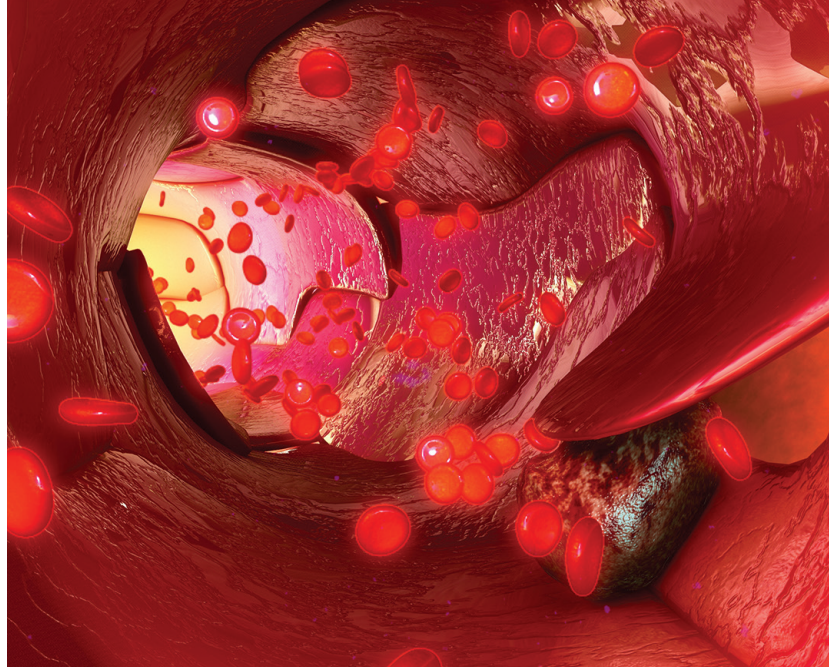


Special Issue
Call for Papers
Submission Deadline
Extended to August 1

The
Journal
of

APPLIED LABORATORY MEDICINE

An AACC Publication



Diagnosis and Management of Sepsis and Blood Stream Infections

Edited by Drs. Jennifer Dien Bard, Susan Butler-Wu, and Allison Chambliss

The journal is seeking submissions that include, but are not limited to, the following areas:

- ▶ Strategies and biomarkers for early identification of patients at high risk of sepsis
- ▶ Emerging diagnostic technologies and rapid diagnostics
- ▶ Role of procalcitonin, biomarkers, and cytokines
- ▶ Antibiotic stewardship and outcome studies
- ▶ Therapeutic drug monitoring and PK/PD for optimized patient management
- ▶ New advances in phenotypic susceptibility testing
- ▶ Approaches to pediatric sepsis

JALM invites authors to submit original articles and case reports related to sepsis and blood stream infection for publication in this special issue. Journal guidelines for submission apply as described in the information for authors.

Submissions received after **August 1st** will be considered for publication but cannot be guaranteed inclusion in the Special Issue.

To be considered for the special issue, submissions must be received at submit.jalm.org by August 1, 2018.

AACC

Better health through
laboratory medicine.