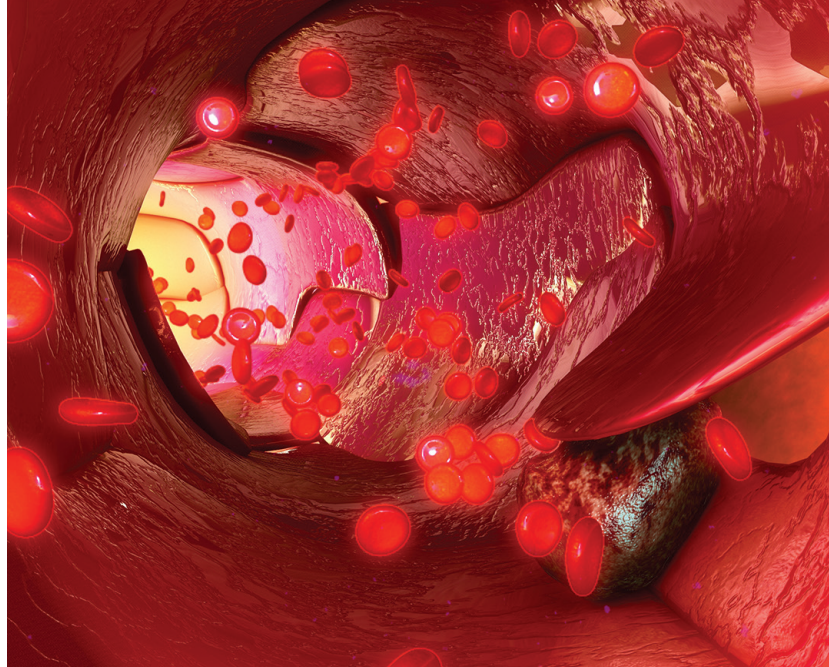


# Special Issue Call for Papers

The  
Journal  
of

## APPLIED LABORATORY MEDICINE

An AACC Publication



# Diagnosis and Management of Sepsis and Blood Stream Infections

Edited by Drs. Jennifer Dien Bard, Susan Butler-Wu, and Allison Chambliss

**The journal is seeking submissions that include, but are not limited to, the following areas:**

- ▶ Strategies and biomarkers for early identification of patients at high risk of sepsis
- ▶ Emerging diagnostic technologies and rapid diagnostics
- ▶ Role of procalcitonin, biomarkers, and cytokines
- ▶ Antibiotic stewardship and outcome studies
- ▶ Therapeutic drug monitoring and PK/PD for optimized patient management
- ▶ New advances in phenotypic susceptibility testing
- ▶ Approaches to pediatric sepsis

*The Journal of Applied Laboratory Medicine (JALM)* is pleased to announce an upcoming special issue titled "The Full Spectrum of Sepsis and Bloodstream Infections: From Diagnosis to Management." This issue will include articles on diagnostic and therapeutic approaches, emerging biomarkers and technologies, and antibiotic stewardship. The issue will highlight the role of all stakeholders, with particular emphasis on the laboratory's role in early identification and management of septic patients.

**Submissions must be received at [submit.jalm.org](http://submit.jalm.org) by June 1, 2018.**

*JALM* invites authors to submit original articles and case reports related to sepsis and blood stream infection for publication in this special issue. Journal guidelines for submission apply as described in the information for authors.

**AACC**

Better health through  
laboratory medicine.