

CONTENTS

EDITORIALS

- What Is the Value of Clinical Laboratory Testing?**339
Timothy Amukele and Lee Schroeder
- Therapeutic Complications: A Caveat for M-Protein Detection**342
David F. Keren (see mini-review on page 421)

ARTICLES

POINT-OF-CARE TESTING

- Assessment of Two Rapid Assays for Diagnostic Capability to Accurately Identify Infection by *Treponema pallidum***346
Niel T. Constantine, Anne M. Sill, Elizabeth Gudesblat, Samantha Paulus, and Ahmed Saleh

AUTOMATION AND ANALYTICAL TECHNIQUES

- Impact of Integrating Rumke Statistics to Assist with Choosing Between Automated Hematology Analyzer Differentials vs Manual Differentials**357
Laura Stephens, Wendy Hintz-Prunty, Hans-Inge Bengtsson, James A. Proudfoot, Sandip Pravin Patel, and H. Elizabeth Broome
- Assessment of FUS-200 Performance: Comparison with Quantitative Urine Culture Shows that Identifying the Right Cutoff for Optimizing Analyzer Performance Is Challenging**365
Jérémie M. Gras, Nathalie Henry, Myriam Othmane, and Guido R. Vranken
- Stability of Biochemical Components in Blood Samples Transported by Tempus600/Sysmex GLP Robot Reception System**376
Ida Boegh Andersen, Nina Mogensen, and Ivan Brandslund
- Practical LC-MS/MS Method for 5-Hydroxyindoleacetic Acid in Urine**387
Zlatuse D. Clark, Jeaneah M. Cutler, and Elizabeth L. Frank

INFECTIOUS DISEASE

- An Ultrapformance LC-MS/MS Method for the Quantification of the Antimalarial Atovaquone in Plasma**400
Allison B. Chambliss, Teresa L. Parsons, and Mark A. Marzinke

LABORATORY MANAGEMENT

- Frequency that Laboratory Tests Influence Medical Decisions**410
Andy Ngo, Paras Gandhi, and W. Greg Miller

FOCUSED REPORT

- Practices and Perceived Value of Proficiency Testing in Clinical Laboratories415**
Marie C. Earley, J. Rex Astles, and Karen Breckenridge

MINI-REVIEW

- Identification of Friend or Foe: The Laboratory Challenge of Differentiating M-Proteins from Monoclonal Antibody Therapies421**
John R. Mills and David L. Murray (see editorial on page 342)

CASE REPORTS

- Discrepant Potassium Results432**
Lu Song, Serge Alexanian, and Scott W. Binder
- Is This Drug Screen Really Negative? Special Investigation of Drug Screening in Pediatrics437**
Amy L. Pyle-Eilola, David J. Thornton, Hannah L. Hays, and Marcel J. Casavant

OPINIONS


- Hematopoiesis Shows Closer Correlation with Calculated Free Testosterone in Men than Total Testosterone441**
David R. Woods, Neil E. Hill, R. Dermot G. Neely, Kate L. Talks, Alison Heggie, and Richard Quinton
- Current State of Bedside Glucose Meter Testing445**
T. Scott Isbell

LETTERS TO THE EDITOR

- In Response to: Utility of Antinuclear Antibody Screening by Various Methods in a Clinical Laboratory Patient Cohort—Differences in Sensitivity, Specificity, and Limitations449**
Frank F. Hall, Eric S. Hoy, and Michael A. DiMaio (see article on page 36 in the July 2016 issue)
- Hemolysis-Icterus-Lipemia Index Analysis: A National Survey on the Validation and Use on Automated Equipment450**
Charlotte Gils, Henrik Frederiksen, and Mads Nybo

LABORATORY REFLECTIONS

TECHNICAL TIPS

- Pediatric Phlebotomy Services: Optimizing Sample Quality and Improving the Patient and Parent Experience453**
Darci R. Block, Twyla M. Rickard, Sharon R. Johnson, Laurie D. Griesmann, and Nicole S. Kang
-  **To Delta Check or Not to Delta Check? That Is the Question457**
Amy B. Karger

PAY IT FORWARD



The Importance of Effective Communication: Some Food for Thought460
Nikola A. Baumann

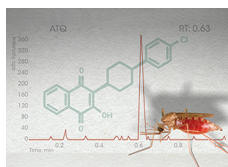
PROFESSIONAL INSIGHT

Spotlight on Laboratory Medicine: A Call for Reflections462
Jeffrey W. Meeusen

REVIEWER ACKNOWLEDGMENT

The Journal of Applied Laboratory Medicine's Invited Reviewers 2016464

COVER IMAGE



The cover for this issue of *JALM* features a mosquito species in the *Anopheles* genus capable of transmitting malaria, one of the world's largest healthcare challenges, particularly in developing countries. According

to the World Health Organization's 2015 estimates, there were 214 million new cases of malaria worldwide, which caused approximately 438 000 deaths, predominately in children. In this issue, a novel method for quantification of the anti-malarial medication atovaquone (ATQ) is reported. The method uses ultraperformance liquid chromatographic-tandem mass spectrometry (UPLC-MS/MS) and was validated according to recommendations from the FDA's "Guidance for Industry: Bioanalytical Method Validation." The structure for ATQ is shown in the image's background. A UPLC-MS/MS chromatogram displaying the ATQ peak is displayed in red in the image.



JALM TALK podcast coming soon to <http://www.jalm.org>.

SOCIAL MEDIA



Follow us on Twitter
http://twitter.com/JALM_AACC



Like us on Facebook
<http://www.facebook.com/JournalAppliedLaboratoryMedicine>



AACC Officers

Michael J. Bennett, *President*
Dennis Dietzen, *President-Elect*
Patricia Jones, *Past President*
Anthony Killeen, *Secretary*
Corinne R. Fantz, *Treasurer*

AACC Board of Directors

Lorin Bachmann
Linnea M. Baudhuin
William Clarke
James Faix
Andrea Rita Hovarth
Stephen Master
Carmen L. Wiley
Paul J. Jannetto

The National Academy
of Clinical
Biochemistry is the
Academy of AACC.

